

CD300E Antibody

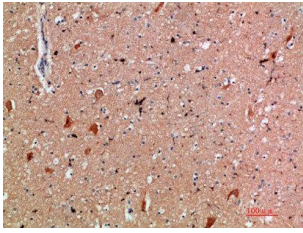


PACO07363

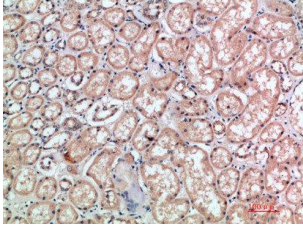
Product Information

Size:	Protein Background:
50ug	
Reactivity:	Gene ID:
Human	CD300E
Source:	Uniprot
Rabbit	Q496F6
Isotype:	Synonyms:
IgG	CMRF35-like molecule 2 (CLM-2) (CD300 antigen-like family member E) (CMRF35-A5) (Immune receptor expressed on myeloid cells 2) (IREM-2) (Polymeric immunoglobulin receptor 2) (PIgR-2) (PIgR2) (Poly-Ig receptor 2) (CD antigen CD300e)
Applications:	Immunogen:
ELISA, IHC	Synthetic peptide from human protein at AA range: 31-80.
Recommended dilutions:	Storage:
ELISA:1:10000-1:20000, IHC-p:1:50-1:300	PBS, pH 7.4, containing 0.02% sodium azide as Preservative and 50% Glycerol.

Product Images



Immunohistochemical analysis of paraffin-embedded human-brain, antibody was diluted at 1:200.



Immunohistochemical analysis of paraffin-embedded human-kidney, antibody was diluted at 1:200.