

BTLA Antibody



PACO07360

Product Information

Size:

50ug

Reactivity:

Human

Source:

Rabbit

Isotype:

IgG

Applications:

ELISA, IHC

Recommended dilutions:

ELISA:1:10000-1:20000, IHC-p:1:50-1:300

Protein Background:

Gene ID:

BTLA

Uniprot

Q7Z6A9

Synonyms:

B- and T-lymphocyte attenuator (B- and T-lymphocyte-associated protein) (CD antigen CD272)

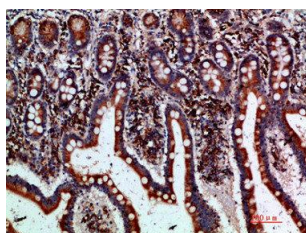
Immunogen:

Synthetic peptide from human protein at AA range: 101-150.

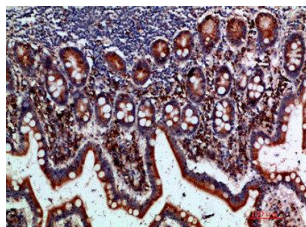
Storage:

PBS, pH 7.4, containing 0.02% sodium azide as Preservative and 50% Glycerol.

Product Images



Immunohistochemical analysis of paraffin-embedded human-small-intestine, antibody was diluted at 1:200.



Immunohistochemical analysis of paraffin-embedded human-small-intestine, antibody was diluted at 1:200.