

# KMT2A Antibody



PACO07353

---

## Product Information

**Size:**

50ug

**Reactivity:**

Human, Mouse, Rat

**Source:**

Rabbit

**Isotype:**

IgG

**Applications:**

ELISA, IHC

**Recommended dilutions:**

ELISA:1:10000-1:20000, IHC-p:1:50-1:300

**Protein Background:****Gene ID:**

KMT2A

**Uniprot**

Q03164

**Synonyms:**

Histone-lysine N-methyltransferase MLL (EC 2.1.1.43) (ALL-1) (CXXC-type zinc finger protein 7) (Lysine N-methyltransferase 2A) (KMT2A) (Trithorax-like protein) (Zinc finger protein HRX) [Cleaved into: MLL cleavage product N320 (N-terminal cleavage product of 320 kDa) (p320); MLL cleavage product C180 (C-terminal cleavage product of 180 kDa) (p180)]

**Immunogen:**

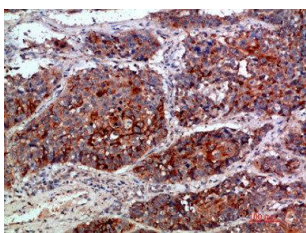
Synthetic peptide from human protein at AA range: 3850-3900.

**Storage:**

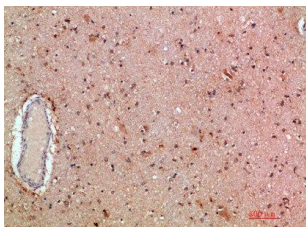
PBS, pH 7.4, containing 0.02% sodium azide as Preservative and 50% Glycerol.

## Product Images

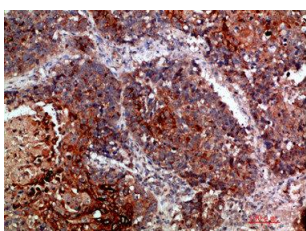
---



Immunohistochemical analysis of paraffin-embedded human-lung-cancer, antibody was diluted at 1:200.



Immunohistochemical analysis of paraffin-embedded human-brain, antibody was diluted at 1:200.



Immunohistochemical analysis of paraffin-embedded human-lung-cancer, antibody was diluted at 1:200.