

# ASIC1 Antibody



PACO07340

---

## Product Information

**Size:**

50ug

**Reactivity:**

Human, Mouse, Rat

**Source:**

Rabbit

**Isotype:**

IgG

**Applications:**

ELISA, WB, IHC

**Recommended dilutions:**

ELISA:1:10000-1:20000, WB:1:500-1:2000,  
IHC:1:50-1:300

**Protein Background:****Gene ID:**

ASIC1

**Uniprot**

P78348

**Synonyms:**

acid, sensing ion channel 1 (ASIC1) (Amiloride-sensitive cation channel 2, neuronal)  
(Brain sodium channel 2) (BNaC2)

**Immunogen:**

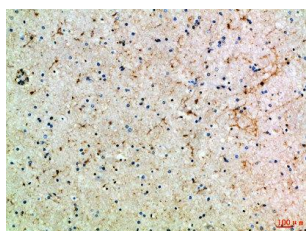
Synthetic peptide from human protein at AA range: 220-280.

**Storage:**

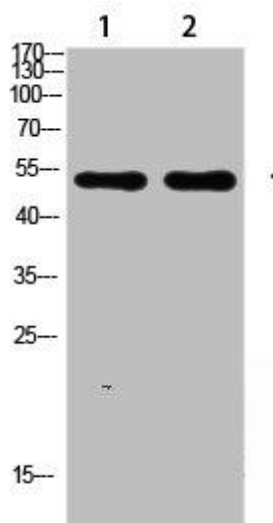
PBS, pH 7.4, containing 0.02% sodium azide as Preservative and 50% Glycerol.

## Product Images

---



Immunohistochemical analysis of paraffin-embedded Human-brain, antibody was diluted at 1:100.



Western blot analysis of SW480 lysate, antibody was diluted at 1000. Secondary antibody was diluted at 1:20000.