

PACO07335

Product Information

Size:

50ug

Reactivity:

Human

Source:

Rabbit

Isotype:

IgG

Applications:

ELISA, WB, IHC

Recommended dilutions:

ELISA:1:10000-1:20000, WB:1:500-1:2000,
IHC-p:1:50-1:300

Protein Background:

Gene ID:

CCR5

Uniprot

P51681

Synonyms:

C-C chemokine receptor type 5 (C-C CKR-5) (CC-CKR-5) (CCR-5) (CCR5) (CHEMR13)
(HIV-1 fusion coreceptor) (CD antigen CD195)

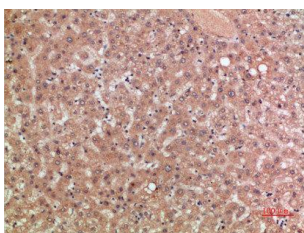
Immunogen:

Synthetic peptide from human protein at AA range: 151-200.

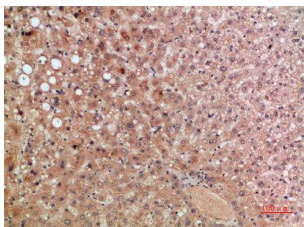
Storage:

PBS, pH 7.4, containing 0.02% sodium azide as Preservative and 50% Glycerol.

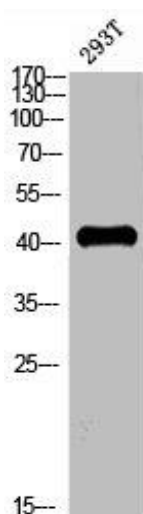
Product Images



Immunohistochemical analysis of paraffin-embedded human-liver, antibody was diluted at 1:200.



Immunohistochemical analysis of paraffin-embedded human-liver, antibody was diluted at 1:200.



Western blot analysis of Hela lysate, antibody was diluted at 2000. Secondary antibody was diluted at 1:20000.