

PENK Antibody



PACO07293

Product Information

Size:

50ug

Reactivity:

Human

Source:

Rabbit

Isotype:

IgG

Applications:

ELISA, WB

Recommended dilutions:

ELISA:1:10000, WB:1:500-1:10000

Protein Background:

Gene ID:

PENK

Uniprot

P01210

Synonyms:

PENK

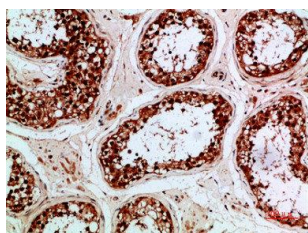
Immunogen:

Synthetic peptide from human protein at AA range: 51-100.

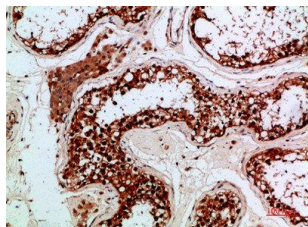
Storage:

PBS, pH 7.4, containing 0.02% sodium azide as Preservative and 50% Glycerol.

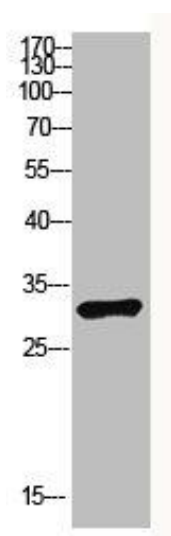
Product Images



Immunohistochemical analysis of paraffin-embedded human-testis, antibody was diluted at 1:200.



Immunohistochemical analysis of paraffin-embedded human-testis, antibody was diluted at 1:200.



Western Blot analysis of NT28 cells using Antibody diluted at 1000. Secondary antibody was diluted at 1:20000.