

CLEC4A Antibody



PACO07277

Product Information

Size:

50ug

Reactivity:

Human

Source:

Rabbit

Isotype:

IgG

Applications:

ELISA, WB

Recommended dilutions:

ELISA:1:10000-1:20000, WB:1:500-1:2000

Protein Background:

Gene ID:

CLEC4A

Uniprot

Q9UMR7

Synonyms:

C-type lectin domain family 4 member A (C-type lectin DDB27) (C-type lectin superfamily member 6) (Dendritic cell immunoreceptor) (Lectin-like immunoreceptor)

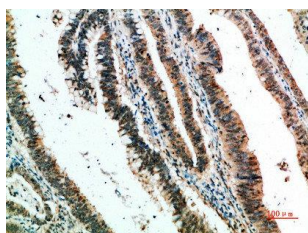
Immunogen:

Synthesized peptide derived from CLECSF6 at AA range: 161-210.

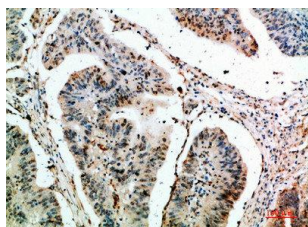
Storage:

Liquid in PBS containing 50% glycerol, 0.5% BSA and 0.02% sodium azide.

Product Images



Immunohistochemical analysis of paraffin-embedded human-colon-cancer, antibody was diluted at 1:200.



Immunohistochemical analysis of paraffin-embedded human-colon-cancer, antibody was diluted at 1:200.



Western Blot analysis of HEPG2 cells using CLECSF6 Polyclonal Antibody diluted at 1:500. Secondary antibody was diluted at 1:20000.