

# CYFIP2 Antibody



PACO07269

---

## Product Information

**Size:**

50ug

**Reactivity:**

Human, Mouse, Rat

**Source:**

Rabbit

**Isotype:**

IgG

**Applications:**

ELISA, WB

**Recommended dilutions:**

ELISA:1:10000-1:20000, WB:1:500-1:2000

**Protein Background:**

**Gene ID:**

CYFIP2

**Uniprot**

Q96F07

**Synonyms:**

Cytoplasmic FMR1-interacting protein 2 (p53-inducible protein 121)

**Immunogen:**

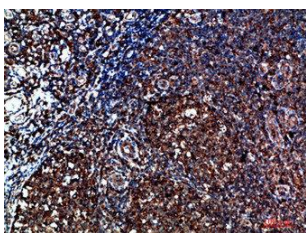
Synthesized peptide derived from CYFIP2 at AA range: 1171-1220.

**Storage:**

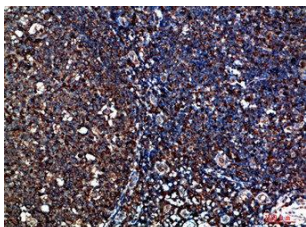
Liquid in PBS containing 50% glycerol, 0.5% BSA and 0.02% sodium azide.

## Product Images

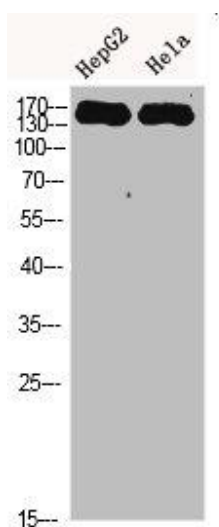
---



Immunohistochemical analysis of paraffin-embedded human-tonsil, antibody was diluted at 1:200.



Immunohistochemical analysis of paraffin-embedded human-tonsil, antibody was diluted at 1:200.



Western Blot analysis of HEPG2 HeLa cells using CYFIP2 Polyclonal Antibody diluted at 1:500. Secondary antibody was diluted at 1:20000.