

TPSD1 Antibody



PACO07265

Product Information

Size:

50ug

Reactivity:

Human

Source:

Rabbit

Isotype:

IgG

Applications:

ELISA, WB

Recommended dilutions:

ELISA:1:10000-1:20000, WB:1:500-1:2000

Protein Background:

Gene ID:

TPSD1

Uniprot

Q9BZJ3

Synonyms:

Tryptase delta (EC 3.4.21.59) (Delta-tryptase) (HmMCP-3-like tryptase III) (Mast cell mMCP-7-like) (Tryptase-3)

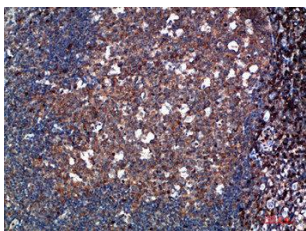
Immunogen:

Synthesized peptide derived from Tryptase-3 at AA range: 51-100.

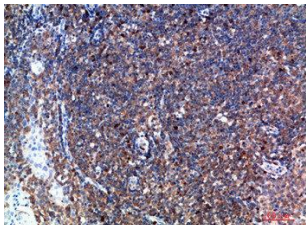
Storage:

Liquid in PBS containing 50% glycerol, 0.5% BSA and 0.02% sodium azide.

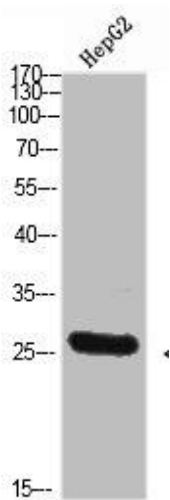
Product Images



Immunohistochemical analysis of paraffin-embedded human-tonsil, antibody was diluted at 1:200.



Immunohistochemical analysis of paraffin-embedded human-tonsil, antibody was diluted at 1:200.



Western Blot analysis of HEPG2 cells using Tryptase-3 Polyclonal Antibody diluted at 1:800. Secondary antibody was diluted at 1:20000.