

BMP10 Antibody

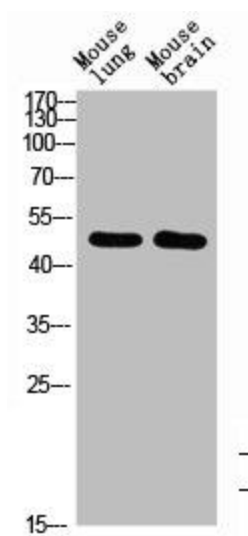


PACO07254

Product Information

Size: 50ug	Protein Background:
Reactivity: Human, Mouse, Rat	Gene ID: BMP10
Source: Rabbit	Uniprot O95393
Isotype: IgG	Synonyms: bone morphogenetic protein 10
Applications: ELISA, WB	Immunogen: Synthesized peptide derived from BMP-10 at AA range: 361-410.
Recommended dilutions: ELISA:1:10000-1:20000, WB:1:500-1:2000	Storage: Liquid in PBS containing 50% glycerol, 0.5% BSA and 0.02% sodium azide.

Product Images



Western Blot analysis of mouse-brain mouse-lung cells using BMP-10 Polyclonal Antibody diluted at 1:1000. Secondary antibody was diluted at 1:20000.