

MET Antibody

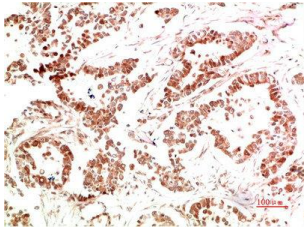


PACO07247

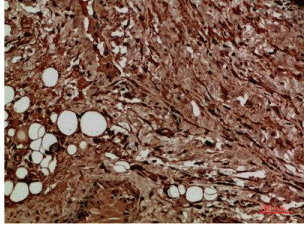
Product Information

Size: 50ug	Protein Background:
Reactivity: Human, Mouse, Rat	Gene ID: MET
Source: Rabbit	Uniprot P08581
Isotype: IgG	Synonyms: MET
Applications: ELISA, IHC	Immunogen: Recombinant Protein of Met of MET.
Recommended dilutions: ELISA:1:2000-1:10000, IHC-p:1:100-1:200	Storage: Liquid in PBS containing 50% glycerol, 0.5% BSA and 0.02% sodium azide.

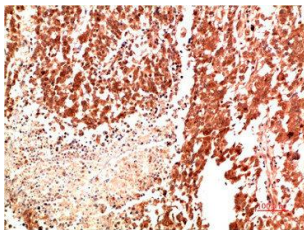
Product Images



Immunohistochemical analysis of paraffin-embedded Human Stomach Carcinoma Tissue using Met Rabbit pAb diluted at 1:500.



Immunohistochemical analysis of paraffin-embedded Human Liver Carcinoma Tissue using Met Rabbit pAb diluted at 1:500.



Immunohistochemical analysis of paraffin-embedded Human Lung Carcinoma Tissue using Met Rabbit pAb diluted at 1:500.