

NCAM1 Antibody



PACO07239

Product Information

Size:

50ug

Reactivity:

Human

Source:

Rabbit

Isotype:

IgG

Applications:

ELISA, WB, IHC

Recommended dilutions:

ELISA:1:10000, WB:1:500-1:2000, IHC-
p:1:100-1:300

Protein Background:

Gene ID:

NCAM1

Uniprot

P13591

Synonyms:

NCAM1; NCAM; Neural cell adhesion molecule 1; N-CAM-1; NCAM-1; CD56

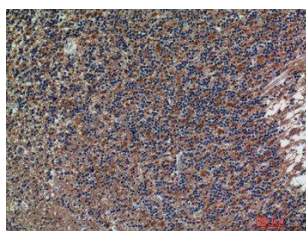
Immunogen:

Synthesized peptide derived from the Internal region of human CD56.

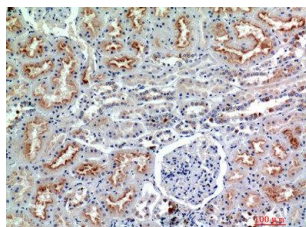
Storage:

Liquid in PBS containing 50% glycerol, 0.5% BSA and 0.02% sodium azide.

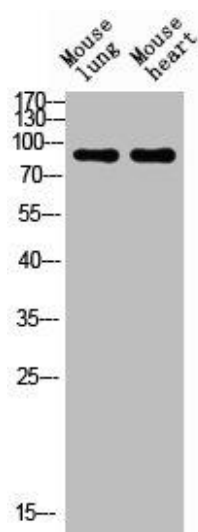
Product Images



Immunohistochemical analysis of paraffin-embedded human-brain, antibody was diluted at 1:200.



Immunohistochemical analysis of paraffin-embedded human-kidney, antibody was diluted at 1:200.



Western blot analysis of mouse-lung mouse-heart lysis using NCAM1 antibody. Antibody was diluted at 1:1000. Secondary antibody was diluted at 1:20000.