

ACER2 Antibody



PACO07237

Product Information

Size:

50ug

Reactivity:

Human, Mouse

Source:

Rabbit

Isotype:

IgG

Applications:

ELISA, WB, IHC

Recommended dilutions:

ELISA:1:10000, WB:1:500-1:2000, IHC-
p:1:100-1:300

Protein Background:**Gene ID:**

ACER2

Uniprot

Q5QJU3

Synonyms:

ACER2; ASAH3L; PP11646; Alkaline ceramidase 2; AlkCDase 2; Alkaline CDase 2; haCER2; Acylsphingosine deacylase 3-like; N-acylsphingosine amidohydrolase 3-like

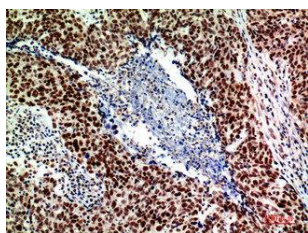
Immunogen:

Synthesized peptide derived from the Internal region of human ASAH3L. at AA range: 50-130.

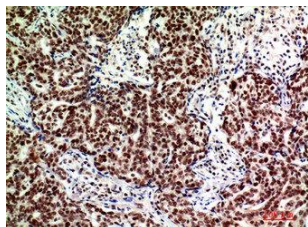
Storage:

Liquid in PBS containing 50% glycerol, 0.5% BSA and 0.02% sodium azide.

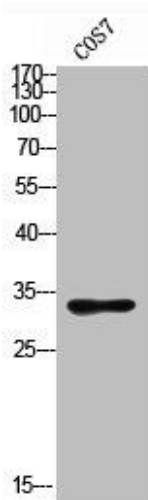
Product Images



Immunohistochemical analysis of paraffin-embedded human-breast-cancer, antibody was diluted at 1:200.



Immunohistochemical analysis of paraffin-embedded human-breast-cancer, antibody was diluted at 1:200.



Western blot analysis of COS7 using ASAHL antibody. Secondary antibody was diluted at 1:20000.