

PACO07231

Product Information

Size:

50ug

Reactivity:

Human

Source:

Rabbit

Isotype:

IgG

Applications:

ELISA, WB, IHC

Recommended dilutions:

ELISA:1:10000, WB:1:500-1:2000, IHC-
p:1:100-1:300

Protein Background:**Gene ID:**

CCL27

Uniprot

Q9Y4X3

Synonyms:

CCL27; ILC; SCYA27; C-C motif chemokine 27; CC chemokine ILC; Cutaneous T-cell-attracting chemokine; CTACK; ESKine; IL-11 R-alpha-locus chemokine; Skinkine; Small-inducible cytokine A27

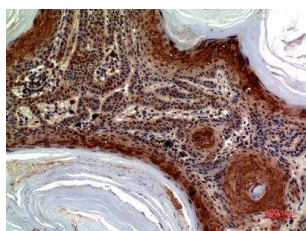
Immunogen:

Synthesized peptide derived from the Internal region of human CTACK.

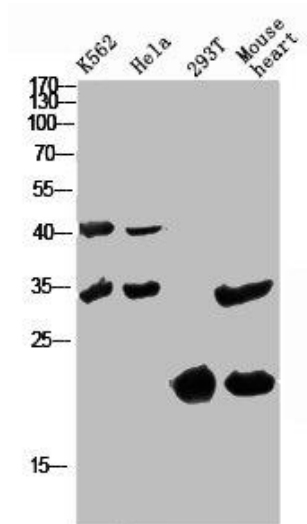
Storage:

Liquid in PBS containing 50% glycerol, 0.5% BSA and 0.02% sodium azide.

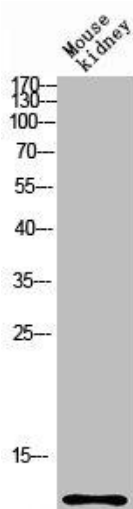
Product Images



Immunohistochemical analysis of paraffin-embedded human-skin, antibody was diluted at 1:100.



Western Blot analysis of various cells using Antibody diluted at 1:1000. Secondary antibody was diluted at 1:20000.



Western blot analysis of mouse-kidney lysis using CCL27 antibody. Antibody was diluted at 1:1000. Secondary antibody was diluted at 1:20000.