

KIR3DL1 Antibody



PACO07227

Product Information

Size:

50ug

Reactivity:

Human

Source:

Rabbit

Isotype:

IgG

Applications:

ELISA, WB, IHC

Recommended dilutions:

ELISA:1:10000, WB:1:500-1:2000, IHC-
p:1:100-1:300

Protein Background:

Gene ID:

KIR3DL1

Uniprot

P43629

Synonyms:

KIR3DL1; CD158E; NKAT3; NKB1; Killer cell immunoglobulin-like receptor 3DL1; CD158 antigen-like family member E; HLA-BW4-specific inhibitory NK cell receptor; MHC class I NK cell receptor; Natural killer-associated transcript 3; NKAT-3; p70 natural killer

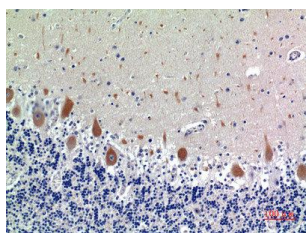
Immunogen:

Synthesized peptide derived from the N-terminal region of human CD158e.

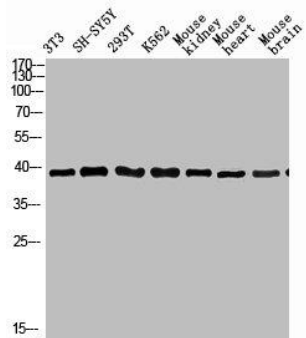
Storage:

Liquid in PBS containing 50% glycerol, 0.5% BSA and 0.02% sodium azide.

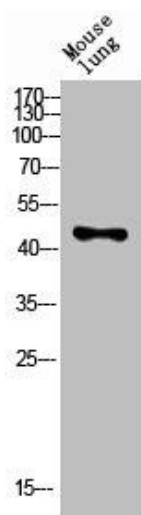
Product Images



Immunohistochemical analysis of paraffin-embedded human-brain, antibody was diluted at 1:100.



Western Blot analysis of various cells using Antibody diluted at 1:1000. Secondary antibody was diluted at 1:20000.



Western blot analysis of mouse-lung lysis using KIR3DL1 antibody. Antibody was diluted at 1:1000. Secondary antibody was diluted at 1:20000.