

CD72 Antibody



PACO07223

Product Information

Size:

50ug

Reactivity:

Human

Source:

Rabbit

Isotype:

IgG

Applications:

ELISA, WB

Recommended dilutions:

ELISA:1:10000, WB:1:500-1:2000

Protein Background:

Gene ID:

CD72

Uniprot

P21854

Synonyms:

CD72; B-cell differentiation antigen CD72; Lyb-2; CD72

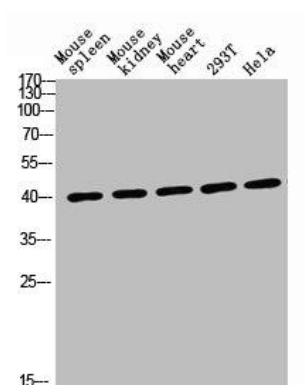
Immunogen:

Synthesized peptide derived from the Internal region of human CD72.

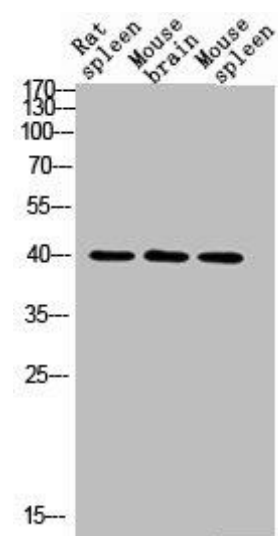
Storage:

Liquid in PBS containing 50% glycerol, 0.5% BSA and 0.02% sodium azide.

Product Images



Western Blot analysis of various cells using Antibody diluted at 1:1000. Secondary antibody was diluted at 1:20000.



Western blot analysis of RAT-SPLEEN MOUSE-BRAIN MOUSE-SPLEEN lysis using CD72 antibody. Antibody was diluted at 1:2000. Secondary antibody was diluted at 1:20000.