

# EDA Antibody



PACO07220

---

## Product Information

**Size:**

50ug

**Reactivity:**

Human, Mouse

**Source:**

Rabbit

**Isotype:**

IgG

**Applications:**

ELISA, WB, IHC

**Recommended dilutions:**

ELISA:1:10000, WB:1:500-1:2000, IHC-  
p:1:100-1:300

**Protein Background:**

**Gene ID:**

EDA

**Uniprot**

Q92838

**Synonyms:**

EDA; ED1; EDA2; Ectodysplasin-A; Ectodermal dysplasia protein; EDA protein

**Immunogen:**

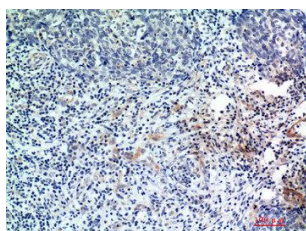
Synthesized peptide derived from the Internal region of human EDA.

**Storage:**

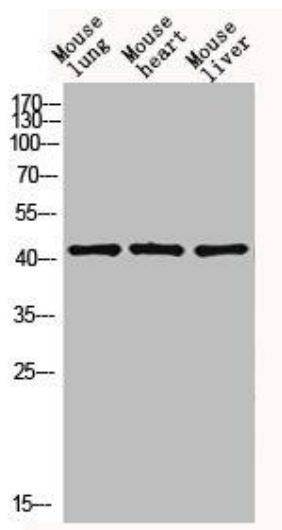
Liquid in PBS containing 50% glycerol, 0.5% BSA and 0.02% sodium azide.

## Product Images

---



Immunohistochemical analysis of paraffin-embedded human-breast-cancer, antibody was diluted at 1:200.



Western blot analysis of mouse-lung mouse-heart mouse-liver lysis using EDA antibody. Antibody was diluted at 1:1000. Secondary antibody was diluted at 1:20000.