

# TNFRSF17 Antibody



PACO07213

---

## Product Information

**Size:**

50ug

**Reactivity:**

Human

**Source:**

Rabbit

**Isotype:**

IgG

**Applications:**

ELISA, WB

**Recommended dilutions:**

ELISA:1:10000, WB:1:500-1:2000

**Protein Background:**

**Gene ID:**

TNFRSF17

**Uniprot**

Q02223

**Synonyms:**

TNFRSF17; BCM; BCMA; Tumor necrosis factor receptor superfamily member 17; B-cell maturation protein; CD269

**Immunogen:**

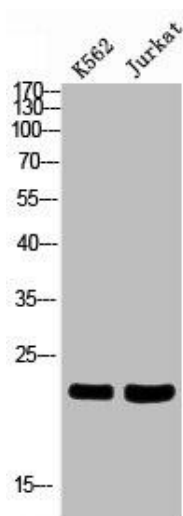
Synthesized peptide derived from the Internal region of human CD269.

**Storage:**

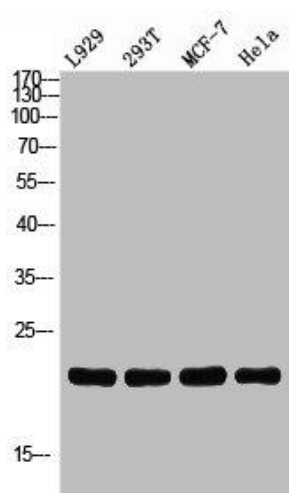
Liquid in PBS containing 50% glycerol, 0.5% BSA and 0.02% sodium azide.

## Product Images

---



Western blot analysis of K562/JK using CD269 antibody. Antibody was diluted at 1:2000. Secondary antibody was diluted at 1:20000.



Western blot analysis of L929 293T MCF7 HELA using CD269 antibody. Antibody was diluted at 1:2000. Secondary antibody was diluted at 1:20000.