

# PIK3C2G Antibody



PACO07210

---

## Product Information

**Size:**

50ug

**Reactivity:**

Human

**Source:**

Rabbit

**Isotype:**

IgG

**Applications:**

ELISA, WB

**Recommended dilutions:**

ELISA:1:10000, WB:1:500-1:2000

**Protein Background:****Gene ID:**

PIK3C2G

**Uniprot**

O75747

**Synonyms:**

PIK3C2G; Phosphatidylinositol 4-phosphate 3-kinase C2 domain-containing subunit gamma; PI3K-C2-gamma; PtdIns-3-kinase C2 subunit gamma; Phosphoinositide 3-kinase-C2-gamma

**Immunogen:**

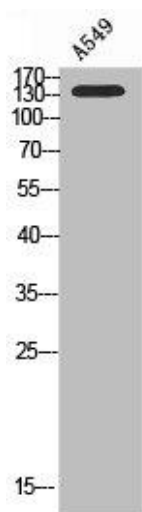
Synthesized peptide derived from the N-terminal region of human PI 3-Kinase C2 &gamma; .

**Storage:**

Liquid in PBS containing 50% glycerol, 0.5% BSA and 0.02% sodium azide.

## Product Images

---



Western blot analysis of A549 using PI 3-Kinase C2 gamma antibody. Secondary antibody was diluted at 1:20000.