

# ANKRD20A1 Antibody



PACO07208

---

## Product Information

**Size:**

50ug

**Reactivity:**

Human

**Source:**

Rabbit

**Isotype:**

IgG

**Applications:**

ELISA, WB

**Recommended dilutions:**

ELISA:1:10000, WB:1:500-1:2000

**Protein Background:**

**Gene ID:**

ANKRD20A1

**Uniprot**

Q5TYW2

**Synonyms:**

ANKRD20A1; ANKRD20A; Ankyrin repeat domain-containing protein 20A1

**Immunogen:**

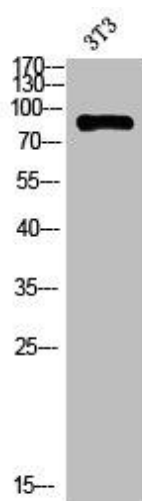
Synthesized peptide derived from the Internal region of human A20.

**Storage:**

Liquid in PBS containing 50% glycerol, 0.5% BSA and 0.02% sodium azide.

## Product Images

---



Western blot analysis of 3T3 using A20 antibody. Secondary antibody was diluted at 1:20000.