

ACER1 Antibody



PACO07204

Product Information

Size:

50ug

Reactivity:

Human

Source:

Rabbit

Isotype:

IgG

Applications:

ELISA, WB

Recommended dilutions:

ELISA:1:10000, WB:1:500-1:2000

Protein Background:**Gene ID:**

ACER1

Uniprot

Q8TDN7

Synonyms:

ACER1; ASAH3; Alkaline ceramidase 1; AlkCDase 1; Alkaline CDase 1; Acylsphingosine deacylase 3; N-acylsphingosine amidohydrolase 3

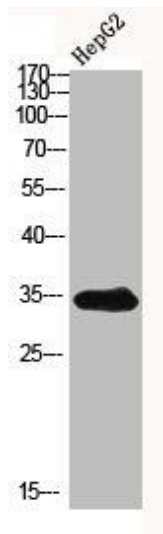
Immunogen:

Synthesized peptide derived from the Internal region of human ASAH3. at AA range: 100-180.

Storage:

Liquid in PBS containing 50% glycerol, 0.5% BSA and 0.02% sodium azide.

Product Images



Western blot analysis of HepG2 using ASA3 antibody. Secondary antibody was diluted at 1:20000.