

MRPL35 Antibody



PACO07202

Product Information

Size:

50ug

Reactivity:

Human, Mouse

Source:

Rabbit

Isotype:

IgG

Applications:

ELISA, WB

Recommended dilutions:

ELISA:1:10000, WB:1:500-1:2000

Protein Background:**Gene ID:**

MRPL35

Uniprot

Q9NZE8

Synonyms:

MRPL35; BM-007; 39S ribosomal protein L35, mitochondrial; L35mt; MRP-L35

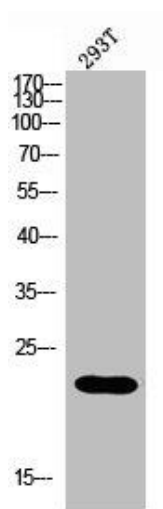
Immunogen:

Synthesized peptide derived from the Internal region of human MRP-L35. at AA range: 80-160.

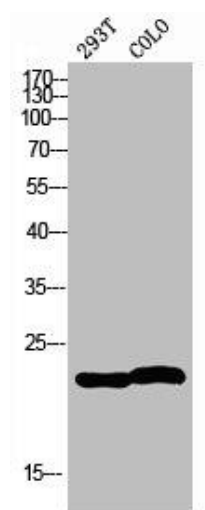
Storage:

Liquid in PBS containing 50% glycerol, 0.5% BSA and 0.02% sodium azide.

Product Images



Western blot analysis of 293 using MRP-L35 antibody. Antibody was diluted at 1:2000. Secondary antibody was diluted at 1:20000.



Western blot analysis of 293T COLO using MRP-L35 antibody. Antibody was diluted at 1:2000. Secondary antibody was diluted at 1:20000.