

DUSP6 Antibody



PACO07195

Product Information

Size:

50ug

Reactivity:

Human, Mouse, Rat

Source:

Rabbit

Isotype:

IgG

Applications:

ELISA, WB

Recommended dilutions:

ELISA:1:2000-1:10000, WB:1:1000-1:3000

Protein Background:**Gene ID:**

DUSP6

Uniprot

Q16828

Synonyms:

DUSP6; MKP3; PYST1; Dual specificity protein phosphatase 6; Dual specificity protein phosphatase PYST1; Mitogen-activated protein kinase phosphatase 3; MAP kinase phosphatase 3; MKP-3

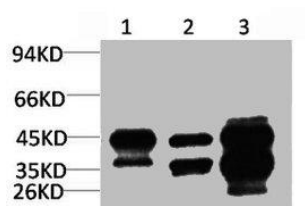
Immunogen:

Synthetic peptide.

Storage:

Liquid in PBS containing 50% glycerol, 0.5% BSA and 0.02% sodium azide.

Product Images



Western blot analysis of 1) HepG2, 2) 3T3, 3) Rat Heart Tissue with DUSP6 Rabbit pAb diluted at 1:3,000.