

KCNH5 Antibody



PACO07193

Product Information

Size:

50ug

Reactivity:

Human, Mouse, Rat

Source:

Rabbit

Isotype:

IgG

Applications:

ELISA, WB, IHC

Recommended dilutions:

ELISA:1:2000-1:10000, WB:1:1000-1:2000,
IHC-p:1:100-1:200

Protein Background:

Gene ID:

KCNH5

Uniprot

Q8NCM2

Synonyms:

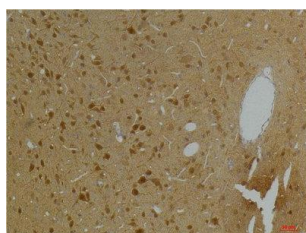
Immunogen:

Synthetic peptide.

Storage:

Liquid in PBS containing 50% glycerol, 0.5% BSA and 0.02% sodium azide.

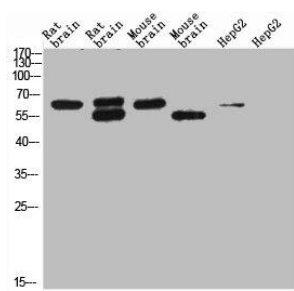
Product Images



Immunohistochemical analysis of paraffin-embedded Rat Brain Tissue using Kv10.2 Rabbit pAb diluted at 1:200.



Immunohistochemical analysis of paraffin-embedded Mouse Brain Tissue using Kv10.2 Rabbit pAb diluted at 1:200.



Western blot analysis of 1) Rat Brain Tissue-Low Molecular Protein Marker, 2) Rat Brain Tissue-High Molecular Protein Marker, 3) Mouse Brain Tissue-Low Molecular Protein Marker, 4) Mouse Brain Tissue-High Molecular Protein Marker, 5) HepG2-Low Molecular P.