

KCNA5 Antibody



PACO07190

Product Information

Size:

50ug

Reactivity:

Human

Source:

Rabbit

Isotype:

IgG

Applications:

ELISA, WB

Recommended dilutions:

ELISA:1:2000-1:10000, WB:1:1000-1:2000

Protein Background:

Gene ID:

KCNA5

Uniprot

P22460

Synonyms:

KCNA5; Potassium voltage-gated channel subfamily A member 5; HPCN1; Voltage-gated potassium channel HK2; Voltage-gated potassium channel subunit Kv1.5

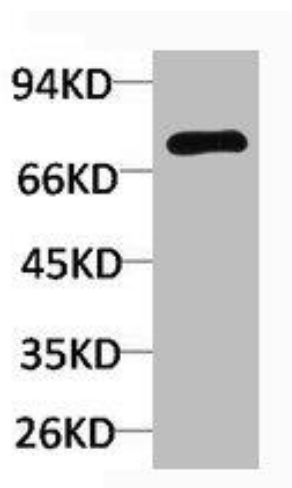
Immunogen:

Synthetic peptide.

Storage:

Liquid in PBS containing 50% glycerol, 0.5% BSA and 0.02% sodium azide.

Product Images



Western blot analysis of 293T with KV1.5 Rabbit pAb diluted at 1:2,000.