

# GHSR Antibody



PACO07180

---

## Product Information

**Size:**

50ug

**Reactivity:**

Human, Mouse, Rat

**Source:**

Rabbit

**Isotype:**

IgG

**Applications:**

ELISA, WB, IHC

**Recommended dilutions:**

ELISA:1:2000-1:10000, WB:1:1000-1:2000,  
IHC-p:1:100-1:200

**Protein Background:****Gene ID:**

GHSR

**Uniprot**

Q92847

**Synonyms:****Immunogen:**

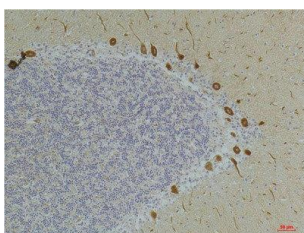
Synthetic peptide.

**Storage:**

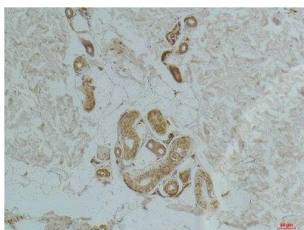
Liquid in PBS containing 50% glycerol, 0.5% BSA and 0.02% sodium azide.

## Product Images

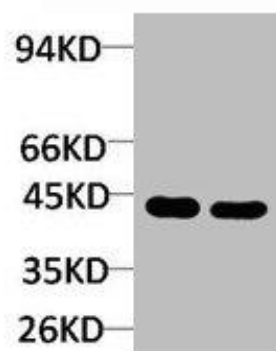
---



Immunohistochemical analysis of paraffin-embedded Human BrainTissue using Ghrelin Receptor Rabbit pAb diluted at 1:200.



Immunohistochemical analysis of paraffin-embedded Human Skin Tissue using Ghrelin Receptor Rabbit pAb diluted at 1:200.



Western blot analysis of 1) Rat LiverTissue, 2)Jurkat with Ghrelin Receptor Rabbit pAb diluted at 1:2,000.