

# GABRA2 Antibody



PACO07175

---

## Product Information

**Size:**

50ug

**Reactivity:**

Human, Mouse, Rat

**Source:**

Rabbit

**Isotype:**

IgG

**Applications:**

ELISA, WB, IHC

**Recommended dilutions:**

ELISA:1:2000-1:10000, WB:1:1000-1:2000,  
IHC-p:1:100-1:200

**Protein Background:**

**Gene ID:**

GABRA2

**Uniprot**

P47869

**Synonyms:**

**Immunogen:**

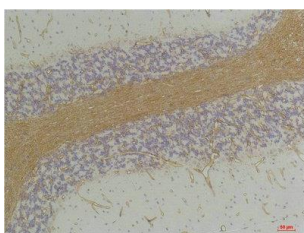
Synthetic peptide.

**Storage:**

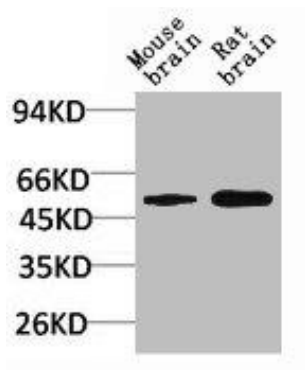
Liquid in PBS containing 50% glycerol, 0.5% BSA and 0.02% sodium azide.

## Product Images

---



Immunohistochemical analysis of paraffin-embedded Rat Brain Tissue using GABA A Receptor alpha 2 Rabbit pAb diluted at 1:200.



Western blot analysis of 1) Mouse Brain Tissue, 2) Rat Brain Tissue with GABA A Receptor alpha 2 Rabbit pAb diluted at 1:2,000.