

# EPG5 Antibody



PACO07165

---

## Product Information

**Size:**

50ug

**Reactivity:**

Human, Mouse, Rat

**Source:**

Rabbit

**Isotype:**

IgG

**Applications:**

WB, IHC

**Recommended dilutions:**

WB:1:1000-1:2000, IHC:1:200-1:500

**Protein Background:**

**Gene ID:**

EPG5

**Uniprot**

Q9HCE0

**Synonyms:**

Ectopic P granules protein 5 homolog

**Immunogen:**

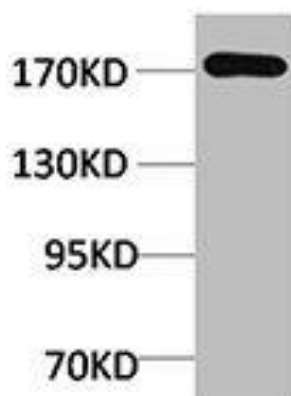
Recombinant Protein.

**Storage:**

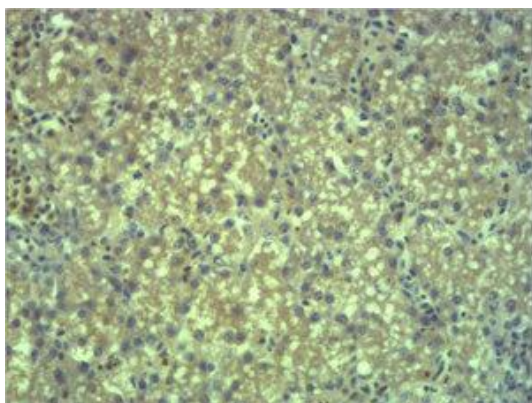
PBS, pH 7.4, containing 0.02% sodium azide as Preservative and 50% Glycerol.

## Product Images

---



Western blot analysis of Rat Liver Tissue using EPG5 Polyclonal Antibody.



Immunohistochemical analysis of paraffin-embedded Mouse Liver Tissue using EPG5 Polyclonal Antibody.