

MAPK3/MAPK1 Antibody



PACO07163

Product Information

Size:

50ug

Reactivity:

Human, Mouse, Rat

Source:

Rabbit

Isotype:

IgG

Applications:

ELISA, WB, IHC

Recommended dilutions:

ELISA:1:10000, WB:1:500-1:2000,
IHC:1:100-1:300

Protein Background:**Gene ID:**

MAPK3/MAPK1

Uniprot

P27361/P28482

Synonyms:

MAPK3; ERK1; PRKM3; Mitogen-activated protein kinase 3; MAP kinase 3; MAPK 3; ERT2; Extracellular signal-regulated kinase 1; ERK-1; Insulin-stimulated MAP2 kinase; MAP kinase isoform p44; p44-MAPK; Microtubule-associated protein 2 kinase; p

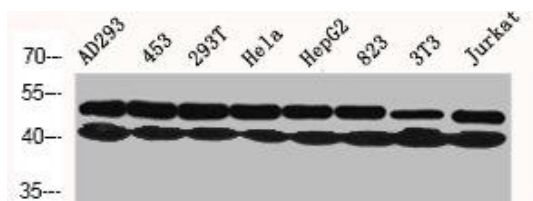
Immunogen:

Synthesized peptide derived from human ERK 1/2 around the non-phosphorylation site of Y204.

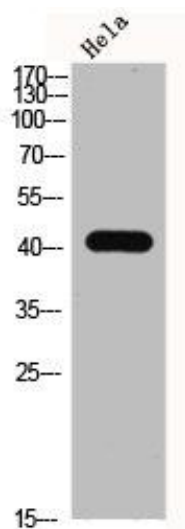
Storage:

Liquid in PBS containing 50% glycerol, 0.5% BSA and 0.02% sodium azide.

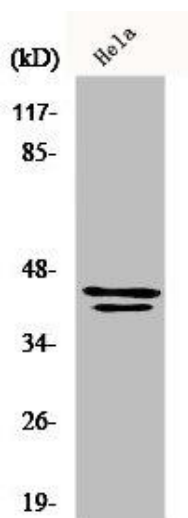
Product Images



Western Blot analysis of AD293 453 293T HELA HepG2 823 NIH-3T3 Jurkat cells using ERK 1/2 Polyclonal Antibody.



Western Blot analysis of HELA using ERK 1/2 Polyclonal Antibody.



Western Blot analysis of HuvEc cells using ERK 1/2 Polyclonal Antibody.