

Phospho-IRS1 (S636) Antibody



PACO07139

Product Information

Size:

50ug

Reactivity:

Human, Mouse, Rat

Source:

Rabbit

Isotype:

IgG

Applications:

ELISA, WB, IHC, IF

Recommended dilutions:

ELISA:1:20000, WB:1:500-1:2000,
IHC:1:100-1:300, IF:1:200-1:1000

Protein Background:**Gene ID:**

IRS1

Uniprot

P35568

Synonyms:

IRS1; Insulin receptor substrate 1; IRS-1

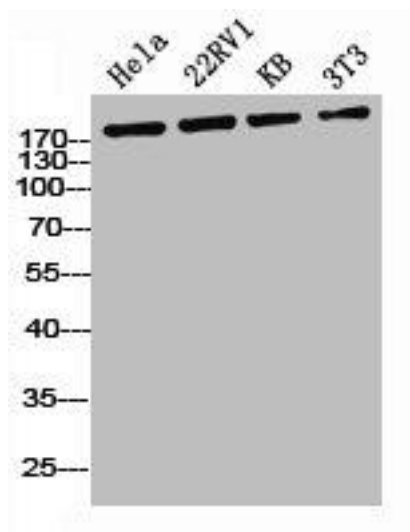
Immunogen:

Synthesized peptide derived from human IRS-1 around the phosphorylation site of S636.

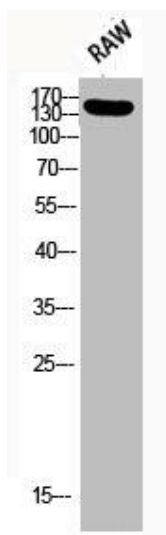
Storage:

Liquid in PBS containing 50% glycerol, 0.5% BSA and 0.02% sodium azide.

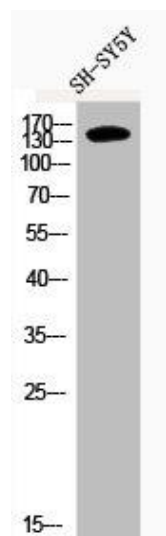
Product Images



Western Blot analysis of HELA 22RV1 KB NIH-3T3 cells using Phospho-IRS-1 (S636) Polyclonal Antibody.



Western Blot analysis of RAW using Phospho-IRS-1 (S636) Polyclonal Antibody.



Western Blot analysis of SH-SY5Y cells using Phospho-IRS-1 (S636) Polyclonal Antibody.