

CD226 Antibody



PACO07129

Product Information

Size:

50ug

Reactivity:

Human, Mouse, Monkey

Source:

Rabbit

Isotype:

IgG

Applications:

ELISA, WB, IHC, IF

Recommended dilutions:

ELISA:1:20000, WB:1:500-1:2000,
IHC:1:100-1:300, IF:1:200-1:1000

Protein Background:

Gene ID:

CD226

Uniprot

Q15762

Synonyms:

CD226; DNAM1; CD226 antigen; DNAX accessory molecule 1; DNAM-1; CD antigen
CD226

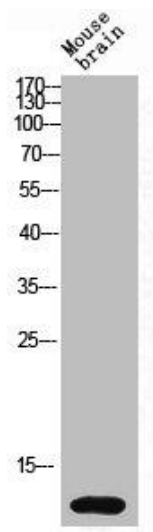
Immunogen:

Synthesized peptide derived from human DNAM-1 around the non-phosphorylation site of S329.

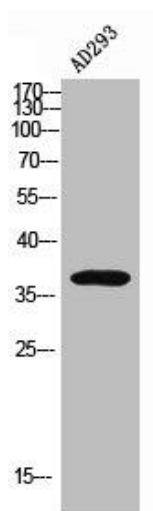
Storage:

Liquid in PBS containing 50% glycerol, 0.5% BSA and 0.02% sodium azide.

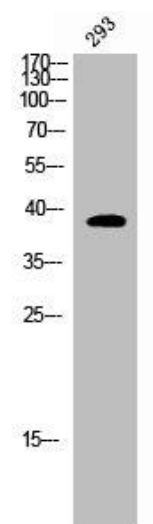
Product Images



Western Blot analysis of mouse-brain cells using DNAM-1 Polyclonal Antibody.



Western Blot analysis of AD293 using DNAM-1 Polyclonal Antibody.



Western Blot analysis of COS7 cells using DNAM-1 Polyclonal Antibody.