

BMP2 Antibody



PACO07127

Product Information

Size:

50ug

Reactivity:

Human, Mouse, Rat

Source:

Rabbit

Isotype:

IgG

Applications:

ELISA, WB

Recommended dilutions:

ELISA:1:10000, WB:1:500-1:2000

Protein Background:

Gene ID:

BMP2

Uniprot

P12643

Synonyms:

BMP2; BMP2A; Bone morphogenetic protein 2; BMP-2; Bone morphogenetic protein 2A; BMP-2A

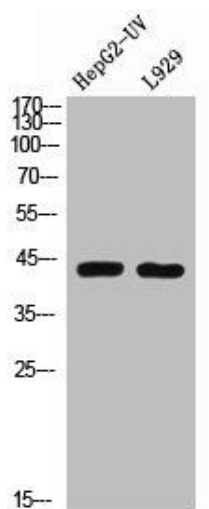
Immunogen:

Synthesized peptide derived from the C-terminal region of human BMP-2.

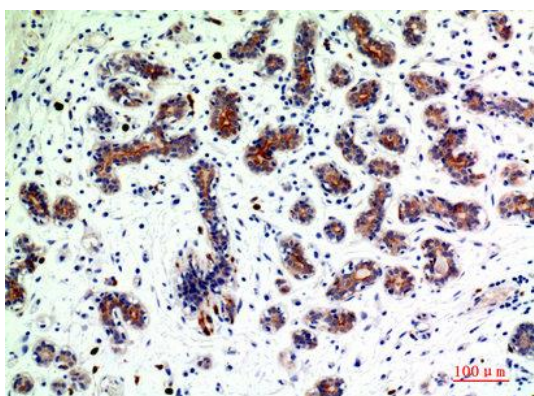
Storage:

Liquid in PBS containing 50% glycerol, 0.5% BSA and 0.02% sodium azide.

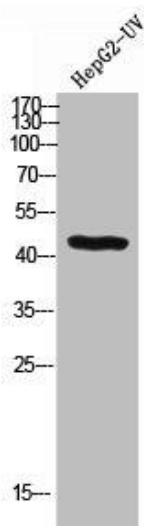
Product Images



Western Blot analysis of HepG2-UV L929 cells using BMP-2 Polyclonal Antibody.



Immunohistochemical analysis of paraffin-embedded human-breast-cancer, antibody was diluted at 1:200.



Western Blot analysis of HEPG2-UV cells using BMP-2 Polyclonal Antibody.