

STAT3 Antibody



PACO07119

Product Information

Size:

50ug

Reactivity:

Human, Mouse, Rat

Source:

Rabbit

Isotype:

IgG

Applications:

ELISA, WB, IHC

Recommended dilutions:

ELISA:1:5000, WB:1:500-1:2000, IHC:1:100-1:300

Protein Background:

Gene ID:

STAT3

Uniprot

P40763

Synonyms:

STAT3; APRF; Signal transducer and activator of transcription 3; Acute-phase response factor

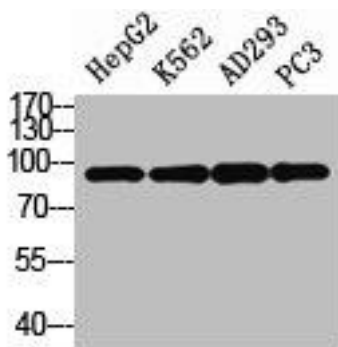
Immunogen:

Synthesized peptide derived from human Stat3 around the non-phosphorylation site of Y705.

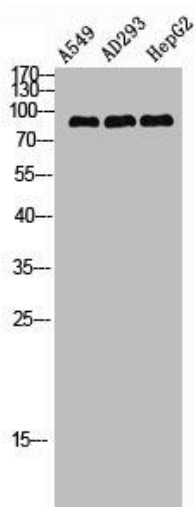
Storage:

Liquid in PBS containing 50% glycerol, 0.5% BSA and 0.02% sodium azide.

Product Images



Western Blot analysis of HepG2 K562 AD293 PC3 cells using Stat3 Polyclonal Antibody.



Western Blot analysis of A549 AD293 HEPG2 using Stat3 Polyclonal Antibody.



Western Blot analysis of NIH-3T3 cells using Stat3 Polyclonal Antibody.