

STK11 Antibody



PACO07100

Product Information

Size:

50ug

Reactivity:

Human, Mouse

Source:

Rabbit

Isotype:

IgG

Applications:

ELISA, WB

Recommended dilutions:

ELISA:1:20000, WB:1:500-1:2000

Protein Background:

Gene ID:

STK11

Uniprot

Q15831

Synonyms:

STK11; LKB1; PJS; Serine/threonine-protein kinase STK11; Liver kinase B1; LKB1; hLKB1; Renal carcinoma antigen NY-REN-19

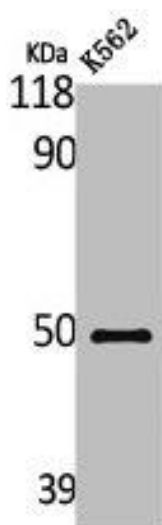
Immunogen:

Synthesized peptide derived from human LKB1 around the non-phosphorylation site of S334.

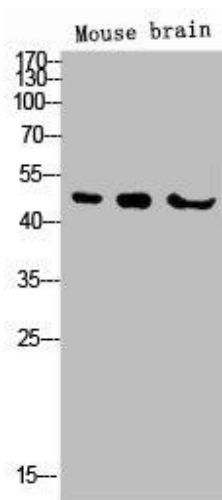
Storage:

Liquid in PBS containing 50% glycerol, 0.5% BSA and 0.02% sodium azide.

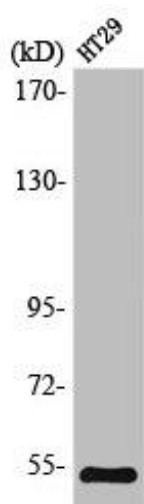
Product Images



Western Blot analysis of K562 cells using LKB1 Polyclonal Antibody.



Western blot analysis of KB 3T3 Hela lysis using LKB1 antibody.



Western Blot analysis of HT29 cells using LKB1 Polyclonal Antibody.