

LIMK1/LIMK2 Antibody



PACO07099

Product Information

Size:

50ug

Reactivity:

Human, Mouse, Rat, Monkey

Source:

Rabbit

Isotype:

IgG

Applications:

ELISA, WB, IHC

Recommended dilutions:

ELISA:1:40000, WB:1:500-1:2000,
IHC:1:100-1:300

Protein Background:**Gene ID:**

LIMK1/LIMK2

Uniprot

P53667/P53671

Synonyms:

LIMK1; LIMK; LIM domain kinase 1; LIMK-1; LIMK2; LIM domain kinase 2; LIMK-2

Immunogen:

Synthesized peptide derived from human LIMK-1/2 around the non-phosphorylation site of T508/505.

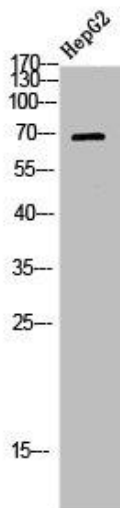
Storage:

Liquid in PBS containing 50% glycerol, 0.5% BSA and 0.02% sodium azide.

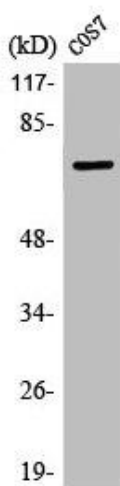
Product Images



Western Blot analysis of HEPG2 using LIMK-1/2 Polyclonal Antibody.



Western Blot analysis of HEPG2 using LIMK-1/2 Polyclonal Antibody.



Western Blot analysis of COS7 cells using LIMK-1/2 Polyclonal Antibody.