

LIMK1 Antibody



PACO07098

Product Information

Size:

50ug

Reactivity:

Human, Mouse, Rat

Source:

Rabbit

Isotype:

IgG

Applications:

ELISA, WB, IHC, IF

Recommended dilutions:

ELISA:1:20000, WB:1:500-1:2000,
IHC:1:100-1:300, IF:1:200-1:1000

Protein Background:

Gene ID:

LIMK1

Uniprot

P53667

Synonyms:

LIMK1; LIMK; LIM domain kinase 1; LIMK-1

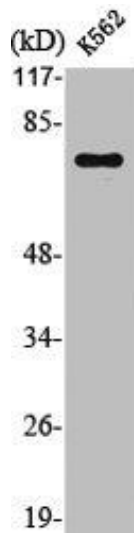
Immunogen:

Synthesized peptide derived from the Internal region of human LIMK-1.

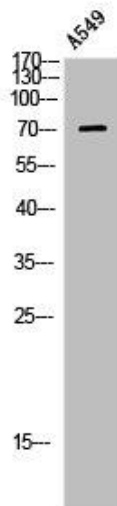
Storage:

Liquid in PBS containing 50% glycerol, 0.5% BSA and 0.02% sodium azide.

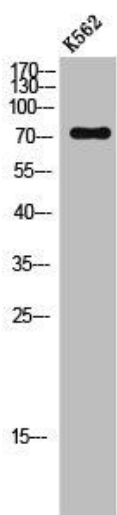
Product Images



Western Blot analysis of K562 cells using LIMK-1 Polyclonal Antibody.



Western Blot analysis of A549 using LIMK-1 Polyclonal Antibody.



Western Blot analysis of K562 cells using LIMK-1 Polyclonal Antibody.