

CLK1 Antibody



PACO07083

Product Information

Size:

50ug

Reactivity:

Human, Mouse

Source:

Rabbit

Isotype:

IgG

Applications:

ELISA, WB, IHC, IF

Recommended dilutions:

ELISA:1:20000, WB:1:500-1:2000,
IHC:1:100-1:300, IF:1:200-1:1000

Protein Background:**Gene ID:**

CLK1

Uniprot

P49759

Synonyms:

CLK1; CLK; Dual specificity protein kinase CLK1; CDC-like kinase 1

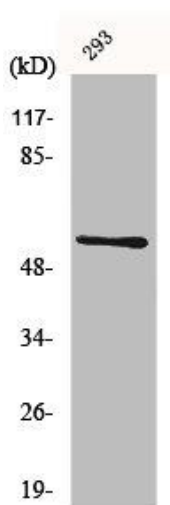
Immunogen:

Synthesized peptide derived from the Internal region of human CLK1.

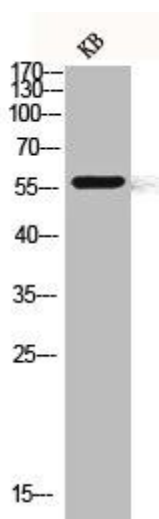
Storage:

Liquid in PBS containing 50% glycerol, 0.5% BSA and 0.02% sodium azide.

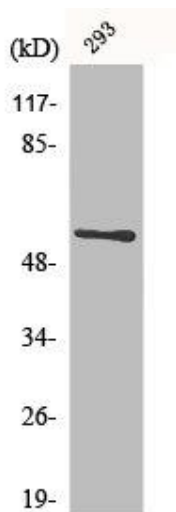
Product Images



Western Blot analysis of 293 cells using CLK1 Polyclonal Antibody.



Western blot analysis of KB lysis using CLK1 antibody.



Western Blot analysis of 293 cells using CLK1 Polyclonal Antibody.