

# Phospho-LIMK1 (T508) Antibody



PACO07072

---

## Product Information

**Size:**

50ug

**Reactivity:**

Human, Mouse, Rat

**Source:**

Rabbit

**Isotype:**

IgG

**Applications:**

ELISA, WB, IHC, IF

**Recommended dilutions:**

ELISA:1:10000, WB:1:500-1:2000,  
IHC:1:100-1:300, IF:1:200-1:1000

**Protein Background:****Gene ID:**

LIMK1

**Uniprot**

P53667

**Synonyms:**

LIMK1; LIMK; LIM domain kinase 1; LIMK-1

**Immunogen:**

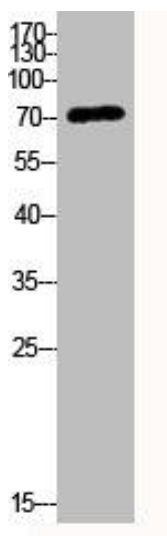
Synthesized peptide derived from human LIMK-1 around the phosphorylation site of T508.

**Storage:**

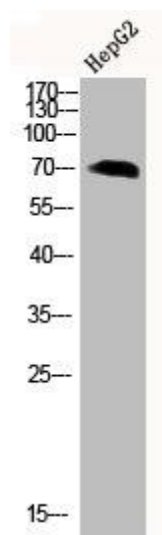
Liquid in PBS containing 50% glycerol, 0.5% BSA and 0.02% sodium azide.

## Product Images

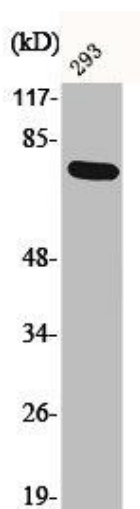
---



Western Blot analysis of various cells using Phospho-LIMK-1 (T508) Polyclonal Antibody.



Western Blot analysis of HEPG2 using Phospho-LIMK-1 (T508) Polyclonal Antibody.



Western Blot analysis of 293 cells using Phospho-LIMK-1 (T508) Polyclonal Antibody.