

# SLC16A3 Antibody



PACO07057

---

## Product Information

**Size:**

50ug

**Reactivity:**

Human, Mouse, Rat

**Source:**

Rabbit

**Isotype:**

IgG

**Applications:**

ELISA, WB

**Recommended dilutions:**

ELISA:1:40000, WB:1:500-1:2000

**Protein Background:****Gene ID:**

SLC16A3

**Uniprot**

O15427

**Synonyms:**

SLC16A3; MCT4; Monocarboxylate transporter 4; MCT 4; Solute carrier family 16 member 3

**Immunogen:**

Synthesized peptide derived from the Internal region of human MCT4.

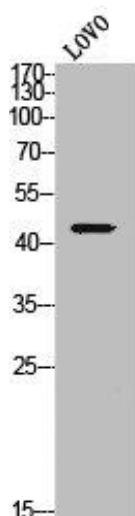
**Storage:**

Liquid in PBS containing 50% glycerol, 0.5% BSA and 0.02% sodium azide.

## Product Images

---

Western Blot analysis of lovo cells using MCT4 Polyclonal Antibody.



Western Blot analysis of PC-3 cells using MCT4 Polyclonal Antibody.

