

CEP135 Antibody



PACO06993

Product Information

Size:

50ug

Reactivity:

Human, Mouse

Source:

Rabbit

Isotype:

IgG

Applications:

ELISA, WB, IHC

Recommended dilutions:

ELISA:1:40000, WB:1:500-1:2000,
IHC:1:100-1:300

Protein Background:

Gene ID:

CEP135

Uniprot

Q66GS9

Synonyms:

CEP135; CEP4; KIAA0635; Centrosomal protein of 135 kDa; Cep135; Centrosomal protein 4

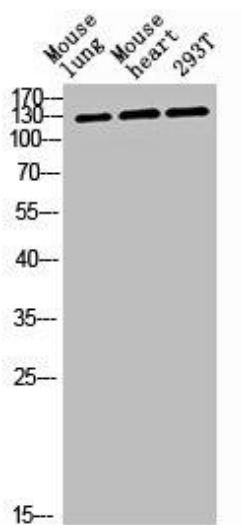
Immunogen:

Synthesized peptide derived from the C-terminal region of human CEP135.

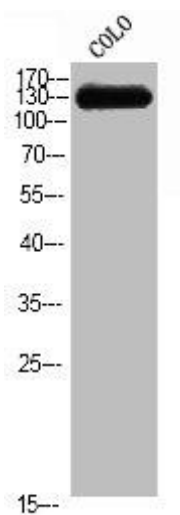
Storage:

Liquid in PBS containing 50% glycerol, 0.5% BSA and 0.02% sodium azide.

Product Images



Western blot analysis of mouse-lung mouse-heart 293T lysis using CEP135 antibody.



Western Blot analysis of COLO cells using CEP135 Polyclonal Antibody.