

# GPR173 Antibody



PACO06970

---

## Product Information

**Size:**

50ug

**Reactivity:**

Human, Mouse, Rat

**Source:**

Rabbit

**Isotype:**

IgG

**Applications:**

ELISA, WB, IF

**Recommended dilutions:**

ELISA:1:10000, WB:1:500-1:2000, IF:1:200-1:1000

**Protein Background:****Gene ID:**

GPR173

**Uniprot**

Q9NS66

**Synonyms:**

GPR173; SREB3; Probable G-protein coupled receptor 173; Super conserved receptor expressed in brain 3

**Immunogen:**

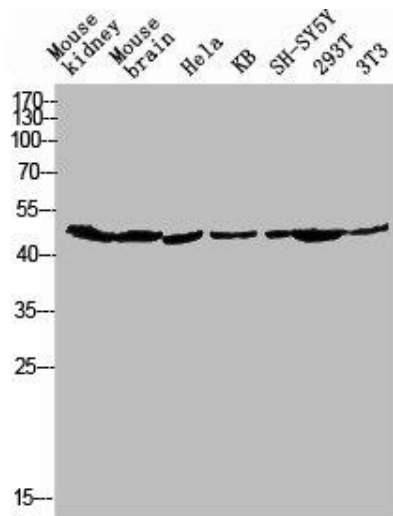
Synthesized peptide derived from the Internal region of human GPR173.

**Storage:**

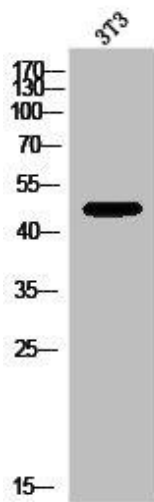
Liquid in PBS containing 50% glycerol, 0.5% BSA and 0.02% sodium azide.

## Product Images

---



Western blot analysis of Mouse-kidney mouse-brain HELA KB SH-SY5Y 293T 3T3 lysis using GPR173 antibody.



Western Blot analysis of 3T3 cells using GPR173 Polyclonal Antibody.