

NUDC Antibody



PACO06938

Product Information

Size:

50ug

Reactivity:

Human, Mouse, Rat

Source:

Rabbit

Isotype:

IgG

Applications:

ELISA, WB, IHC

Recommended dilutions:

ELISA:1:10000, WB:1:500-1:2000,
IHC:1:100-1:300

Protein Background:

Gene ID:

NUDC

Uniprot

Q9Y266

Synonyms:

NUDC; Nuclear migration protein nudC; Nuclear distribution protein C homolog

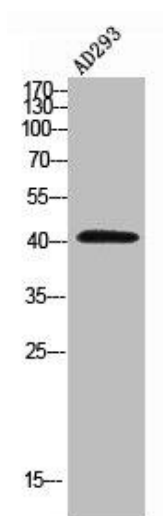
Immunogen:

Synthesized peptide derived from human NUDC around the non-phosphorylation site of S326.

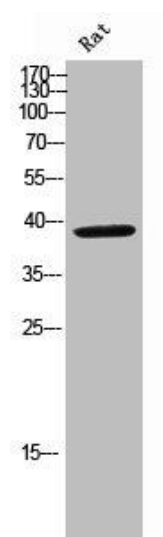
Storage:

Liquid in PBS containing 50% glycerol, 0.5% BSA and 0.02% sodium azide.

Product Images



Western Blot analysis of AD293 using NUDC Polyclonal Antibody.



Western Blot analysis of rat cells using NUDC Polyclonal Antibody.