

ITGB3 Antibody



PACO06890

Product Information

Size:

50ug

Reactivity:

Human

Source:

Rabbit

Isotype:

IgG

Applications:

ELISA, WB

Recommended dilutions:

ELISA:1:10000, WB:1:500-1:2000

Protein Background:

Gene ID:

ITGB3

Uniprot

P05106

Synonyms:

ITGB3; GP3A; Integrin beta-3; Platelet membrane glycoprotein IIIa; GPIIIa; CD61

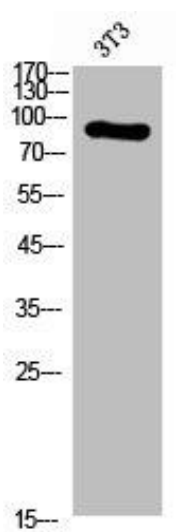
Immunogen:

Synthesized peptide derived from the C-terminal region of human Integrin β 3.

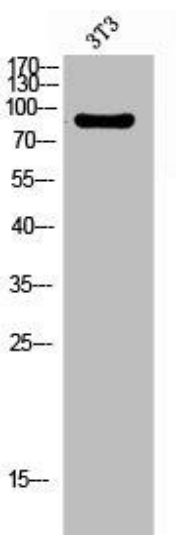
Storage:

Liquid in PBS containing 50% glycerol, 0.5% BSA and 0.02% sodium azide.

Product Images



Western Blot analysis of NIH-3T3 cells using Integrin beta 3 Polyclonal Antibody.



Western Blot analysis of 3T3 cells using Integrin beta 3 Polyclonal Antibody.