

PACO06877

Product Information

Size:

50ug

Reactivity:

Human

Source:

Rabbit

Isotype:

IgG

Applications:

ELISA, WB

Recommended dilutions:

ELISA:1:20000, WB:1:500-1:2000

Protein Background:**Gene ID:**

CYBB

Uniprot

P04839

Synonyms:

CYBB; NOX2; Cytochrome b-245 heavy chain; CGD91-phox; Cytochrome b(558) subunit beta; Cytochrome b558 subunit beta; Heme-binding membrane glycoprotein gp91phox; NADPH oxidase 2

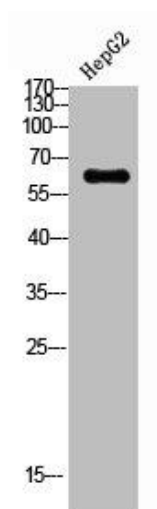
Immunogen:

Synthesized peptide derived from the Internal region of human gp91-phox.

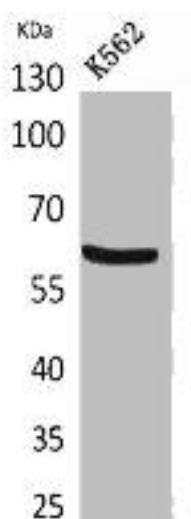
Storage:

Liquid in PBS containing 50% glycerol, 0.5% BSA and 0.02% sodium azide.

Product Images



Western Blot analysis of HEPG2 using gp91-phox Polyclonal Antibody.



Western Blot analysis of K562 cells using gp91-phox Polyclonal Antibody.