

PACO06867

---

## Product Information

**Size:**

50ug

**Reactivity:**

Human, Mouse, Rat

**Source:**

Rabbit

**Isotype:**

IgG

**Applications:**

ELISA, WB

**Recommended dilutions:**

ELISA:1:20000, WB:1:500-1:2000

**Protein Background:**

**Gene ID:**

TF

**Uniprot**

P02787

**Synonyms:**

TF; Serotransferrin; Transferrin; beta-1 metal-binding globulin; Siderophilin

**Immunogen:**

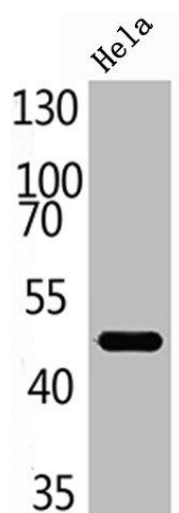
Synthesized peptide derived from the C-terminal region of human Transferrin.

**Storage:**

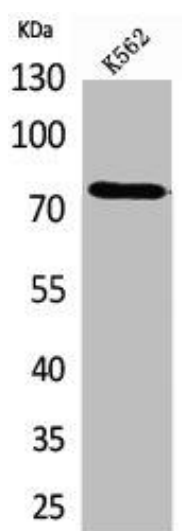
Liquid in PBS containing 50% glycerol, 0.5% BSA and 0.02% sodium azide.

## Product Images

---



Western Blot analysis of HELA using TF Polyclonal Antibody.



Western Blot analysis of K562 cells using Transferrin Polyclonal Antibody.