

# ACTA1 Antibody



PACO06863

---

## Product Information

**Size:**

50ug

**Reactivity:**

Human, Mouse, Rat

**Source:**

Rabbit

**Isotype:**

IgG

**Applications:**

ELISA, WB

**Recommended dilutions:**

ELISA:1:20000, WB:1:500-1:2000

**Protein Background:**

**Gene ID:**

ACTA1

**Uniprot**

P68133

**Synonyms:**

ACTA1; ACTA; Actin, alpha skeletal muscle; alpha-actin-1; ACTA2; ACTSA; ACTVS; GIG46; Actin, aortic smooth muscle; alpha-actin-2; Cell growth-inhibiting gene 46 protein; ACTC1; ACTC; Actin, alpha cardiac muscle 1; alpha-cardiac actin

**Immunogen:**

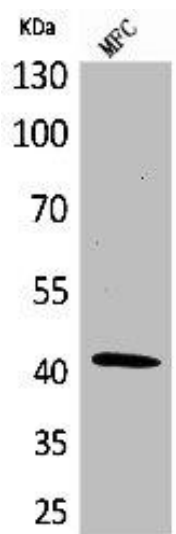
Synthesized peptide derived from the C-terminal region of human  $\alpha$ -SMA.

**Storage:**

Liquid in PBS containing 50% glycerol, 0.5% BSA and 0.02% sodium azide.

## Product Images

---



Western Blot analysis of MCF cells using alpha -SMA Polyclonal Antibody.