

# WNT1 Antibody



PACO06856

---

## Product Information

**Size:**

50ug

**Reactivity:**

Human, Mouse

**Source:**

Rabbit

**Isotype:**

IgG

**Applications:**

ELISA, WB, IHC, IF

**Recommended dilutions:**

ELISA:1:10000, WB:1:500-1:2000,  
IHC:1:100-1:300, IF:1:200-1:1000

**Protein Background:**

**Gene ID:**

WNT1

**Uniprot**

P04628

**Synonyms:**

WNT1; INT1; Proto-oncogene Wnt-1; Proto-oncogene Int-1 homolog

**Immunogen:**

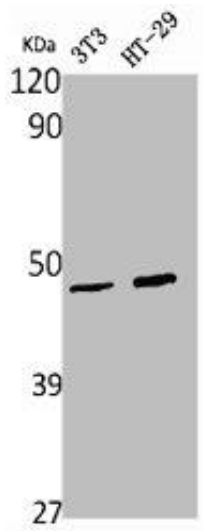
Synthesized peptide derived from the C-terminal region of human Wnt-1.

**Storage:**

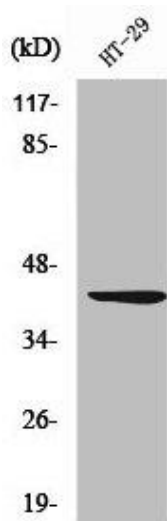
Liquid in PBS containing 50% glycerol, 0.5% BSA and 0.02% sodium azide.

## Product Images

---



Western Blot analysis of NIH-3T3 HT29 cells using Wnt-1 Polyclonal Antibody.



Western Blot analysis of HT29 cells using Wnt-1 Polyclonal Antibody.