

SS18 Antibody



PACO06830

Product Information

Size:

50ug

Reactivity:

Human, Mouse, Rat

Source:

Rabbit

Isotype:

IgG

Applications:

ELISA, WB, IHC

Recommended dilutions:

ELISA:1:20000, WB:1:500-1:2000,
IHC:1:100-1:300

Protein Background:**Gene ID:**

SS18

Uniprot

Q15532

Synonyms:

SS18; SSXT; SYT; Protein SSXT; Protein SYT; Synovial sarcoma translocated to X chromosome protein

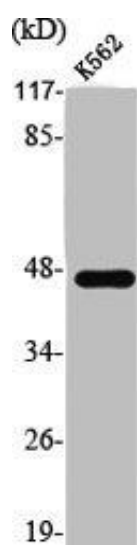
Immunogen:

Synthesized peptide derived from the N-terminal region of human SYT.

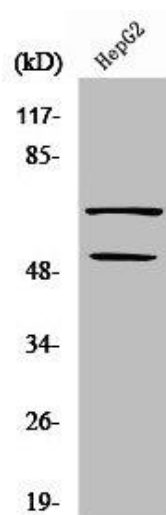
Storage:

Liquid in PBS containing 50% glycerol, 0.5% BSA and 0.02% sodium azide.

Product Images



Western Blot analysis of K562 cells using SYT Polyclonal Antibody.



Western Blot analysis of COLO205 cells using SYT Polyclonal Antibody.