

PACO06822

Product Information

Size:

50ug

Reactivity:

Human

Source:

Rabbit

Isotype:

IgG

Applications:

ELISA, WB, IHC

Recommended dilutions:

ELISA:1:40000, WB:1:500-1:2000,
IHC:1:100-1:300

Protein Background:

Gene ID:

SSB

Uniprot

P05455

Synonyms:

SSB; Lupus La protein; La autoantigen; La ribonucleoprotein; Sjogren syndrome type B antigen; SS-B

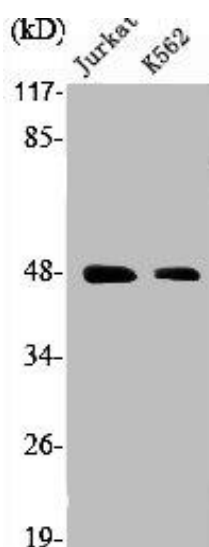
Immunogen:

Synthesized peptide derived from human SSB around the non-phosphorylation site of S366.

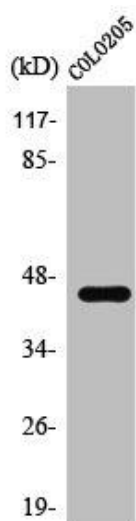
Storage:

Liquid in PBS containing 50% glycerol, 0.5% BSA and 0.02% sodium azide.

Product Images



Western Blot analysis of Jurkat K562 cells using SSB Polyclonal Antibody.



Western Blot analysis of COLO205 cells using SSB Polyclonal Antibody.