

SLC5A3 Antibody



PACO06817

Product Information

Size:

50ug

Reactivity:

Human, Mouse, Rat

Source:

Rabbit

Isotype:

IgG

Applications:

ELISA, WB

Recommended dilutions:

ELISA:1:10000, WB:1:500-1:2000

Protein Background:

Gene ID:

SLC5A3

Uniprot

P53794

Synonyms:

SLC5A3; Sodium/myo-inositol cotransporter; Na(+)/myo-inositol cotransporter; Sodium/myo-inositol transporter 1; SMIT1; Solute carrier family 5 member 3

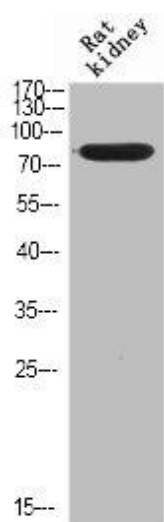
Immunogen:

Synthesized peptide derived from the Internal region of human SMIT.

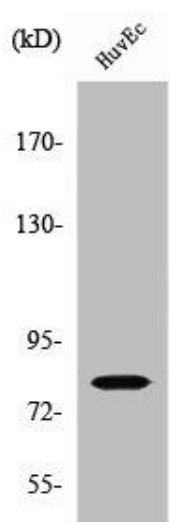
Storage:

Liquid in PBS containing 50% glycerol, 0.5% BSA and 0.02% sodium azide.

Product Images



Western Blot analysis of RAT-KIDNEY cells using SMIT Polyclonal Antibody.



Western Blot analysis of HuvEc cells using SMIT Polyclonal Antibody.